

CHRISTIE
BOXER SERIES
★ UNDISPUTED PERFORMANCE ★

STILL THE REIGNING
CHAMP

Christie Boxer is the #1 selling
high brightness projector over
28,000 lumens in the market¹



CHRISTIE®

Christie Boxer Series

The Christie® Boxer Series of 3DLP® projectors represents the smartest, brightest and lightest high-performance, professional projectors available. Engineered, designed and built in our world-class facility, this series is the culmination of working closely with leading staging companies and AV professionals to understand their specific needs and expectations.

Weighing in at a svelte 160 lbs and including superior connectivity and a host of smart monitoring features, the Boxer Series packs a punch for high-impact visual events.

Pound-for-pound, the top performing projectors available

Christie TruLife™ electronics - a quantum leap in video-image processing, this platform forms the basis for the latest generation of projectors capable of delivering ultra-high resolution, high frame-rate video with unprecedented image fidelity. The only electronics in the market to have 1.2Gbps bandwidth ensuring high quality 4K signals aren't compromised by compression or the addition of artifacts due to inadequate processing.

Pixel perfect images - all the time. When we say 4K@60 and 4K@120 we mean true pixel perfect 4K (4096 x 2160) at the stated frame rate. No tricks. No scaling. No motion artifacts from pixel shifting and no edge enhancement artifacts. When applications require precise, accurate content, with high resolution and high frame rates, on a display larger than 100", nothing compares.

- › Native 4K DMD ensures every pixel gets perfectly replicated and displayed full time
- › Boxer 2K upscales content to be displayed on a 4K DMD which means 2K looks better

6 Mercury lamps designed for long life - 1500 hrs to 70%, 2500 hrs to 50% - Boxer's lamp tray system is designed to easily get you back to full brightness in minutes keeping Boxer looking as good as it did on Day 1.





1.45-1.8:1 ZOOM LENS KONICA MINOLTA

Built with the user in mind

Short timelines, tight budgets and high expectations. AV professionals have enough to worry about - their projectors shouldn't be one of them. That's why we've optimized the Christie® Boxer to provide an exceptional and intuitive, profit-focused user experience.

- › Low cost of ownership
- › Low maintenance
- › Several models to choose from
- › Compact, lightweight and rugged
- › Smallest 30K projector on the market
- › 360-degree omnidirectional
- › Easy rigging and stacking
- › Near Field Communication (NFC) enabled
- › On-board toolkit
- › Low power preview mode
- › Accepts HDR10 signals
- › High bandwidth multi-input card (HBMIC)
- › Full bandwidth point-to-point fiber capabilities
- › AV system integration with Terra SDVoE input card
- › Built-in Christie Twist™ image warping and blending software
- › Compatible with Christie Mystique™ Install
- › User-friendly interface



Superior connectivity

	Boxer	Competitor A	Competitor B
Direct Fiber 40G (Christie Link)	Standard		
SDVoE (Christie Terra)	Optional		
12G-SDI	Standard (x2)		
Multi 3G-SDI	Optional	Standard	Standard
DisplayPort 1.2	Standard	Standard	
Multi-DisplayPort 1.1	Optional		
HDMI 2.0	Standard	Standard	
Multi HDMI	Optional		
Multi DVI-D	Optional		
HDBaseT™	Standard	Standard	Standard



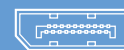
Direct
Fiber 40G



SFP+ 10G



12G-SDI



DisplayPort



HDMI



DVI-D



HDBaseT

Christie TruLife electronics platform

The Christie TruLife™ electronics platform is the basis for the latest generation of projectors capable of delivering ultra-high resolution, high-frame-rate video with unprecedented image fidelity. Leveraging the latest in FPGA integrated circuits and a proprietary floating point architecture (the equivalent of 25 bits fixed point processing resolution), Christie TruLife supports a video-processing pipeline of up to 1.2 Gigapixels per second (GPix/s), enabling the only 4K DLP® image processing at 120Hz - unmatched performance in the market.

A standard feature on all 2K Boxer models, Christie TruLife Lite provides superior video processing for 2K and HD sources. Using the proprietary floating-point processing engine, Christie TruLife Lite provides increased dynamic range and superior scaling for an exceptional visual experience up to 60Hz performance.



Beyond the box

Christie Twist for warping and blending arrays

Manage arrayed projectors to display virtually any image, anywhere with Christie® Twist™. Christie Twist allows pixels to be mapped more easily onto any projection surface, maintaining proper geometry and accurate pixel-to-pixel alignment. The free software download controls image warping and blending for up to six Boxers in the same array. Optional Christie Twist Premium and Pro software support additional projector arrays and enhanced controls.



Image on curved screen
- without blending



Curved screen
- with blending

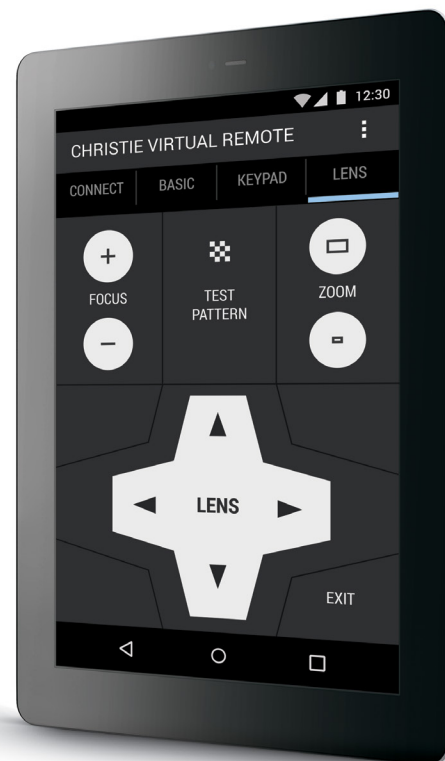
Christie Virtual Remote - a versatile wireless projector control app

The Christie Virtual Remote app provides a Wi-Fi® projector control alternative for Android smartphone or tablet which can be used anywhere, while maintaining all the capabilities of the standard IR remote. Users can scan for available projectors on the network to add them to a group, or manually type in the IP address of the desired projector.

Christie Mystique Install - perfectly align arrays in minutes

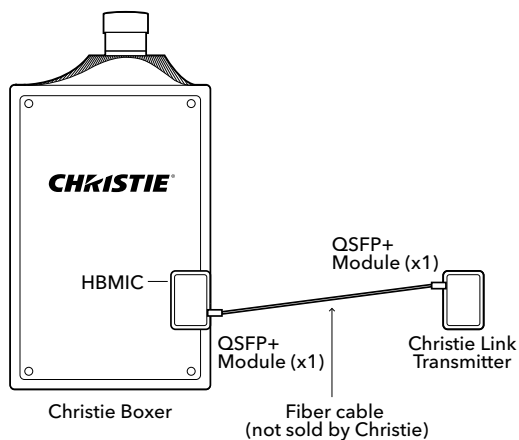
Christie Mystique™ is a full suite of software, hardware and services that removes the technological constraints of fulfilling multi-projector arrays and complex screen setups, which require expert configuration, alignment, warping and blending. Christie Mystique Install includes advanced camera-based alignment tools, solutions and services required to significantly simplify these applications.

CHRISTIE MYSTIQUE 



High Bandwidth Multi-Input Card (HBMIC)

The High Bandwidth Multi-Input Card (HBMIC) is a standard on all Boxers and provides a wide selection of connections including two 12G-SDI inputs and allows for 4K@60Hz over a single cable. The HBMIC also adds direct fiber input capability for use with a Christie Link Transmitter (sold separately or as part of a bundle). All inputs offer preview capability and fast syncing or switching between inputs.



Christie Link transmitters let you go further

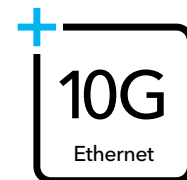
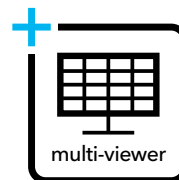
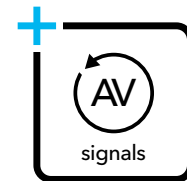
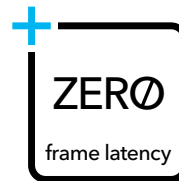
Simplify your setup, increase system reliability and go further with Christie Link onboard fiber input for direct point-to-point fiber connections supporting high quality 4K. Easily send high-bandwidth signals (up to 4K@120Hz) over long distances (up to 6.2 miles /10 km) directly into the projector on a single-fiber cable without latency or compression.

Designed to work perfectly with Christie Boxer projectors Christie Link can manage EDIDs throughout the entire system which helps ensure reliable performance.

Christie Terra – do more with SDVoE AV over IP

Christie Terra is an AV over IP solution enabling the transport, processing and control of audio visual content using the Software Defined Video over Ethernet (SDVoE) standard. Terra comprises a Transmitter, Receiver and Controller. On the Boxer, the SDVoE input allows for direct interfacing of 4K AV content and control over 10G Ethernet for highly flexible, scalable and efficient AV system integration.

CHRISTIE
+terra



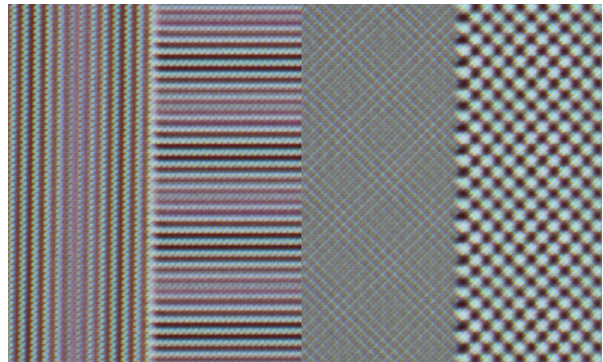
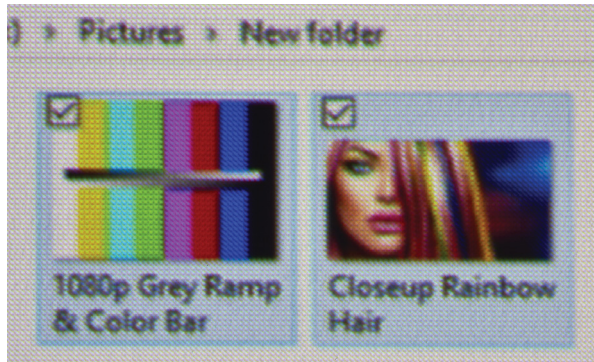
Not all 4K is equal



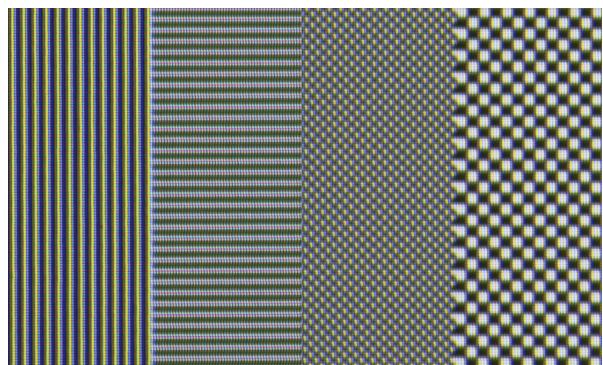
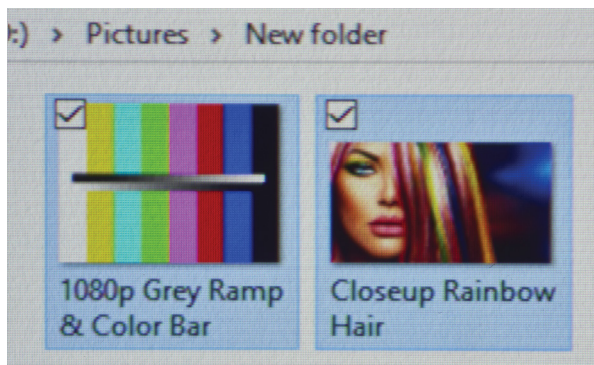
Some projectors use imagers with a lower native resolution and rely on optical actuators to rapidly shift pixels around on screen. This can trick the eye into thinking it's seeing a higher resolution image, but at any given time it is impossible to display the full 4K signal. While these pixel shifting technologies try to mathematically preserve content, they ultimately can't and they introduce scaling artifacts and image manipulation. While these pixel shifting solutions can be applicable for some applications where accurate 4K isn't mandatory, they can't deliver full 4K temporal resolution.

Native 4K (4096 x 2160) provides perfect pixel reproduction, addressing processing speeds up to 120Hz, with all pixels on the screen simultaneously in real time. When applications require precise, accurate content, with high resolution and high frame rates, on a display larger than 100", there's nothing better.

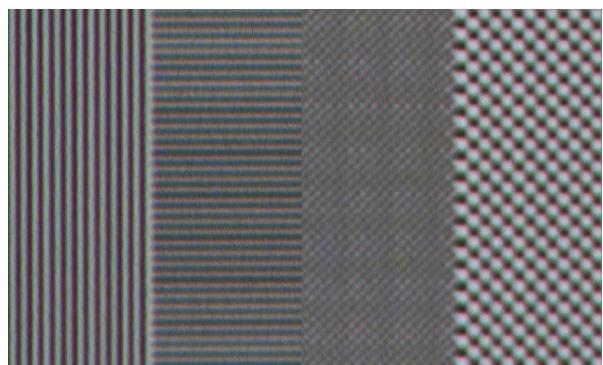
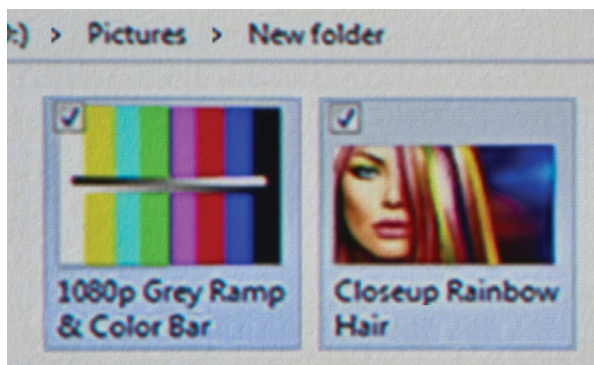
Pixel shifted 4K (Shifted WUXGA - 1920 x 1200)
4M pixels



Native 4K
8.8M perfect pixels all the time



Pixel shifted 4K (Shifted WQXGA - 2560 x 1600)
8.3M interpolated pixels - time sequenced



Christie Boxer Series

		Christie Boxer 4K30	Christie Boxer 4K20
Image	brightness	Up to 32,500 ISO 30,000 Center 29,000 ANSI (typical)	Up to 22,000 ISO 20,000 Center 19,500 ANSI (typical)
	contrast	2000:1	2000:1
Display	technology	3DLP 1.38" 4K DMD	3DLP 1.38" 4K DMD
	resolution	4K (4096 x 2160)	4K (4096 x 2160)
Lamps		6 x 450W NSH	4 x 450W NSH
Inputs	standard	2 x 12G-SDI 1 x HDMI 2.0 1 x DisplayPort 1.2 1 x Fiber (QSFP+) for use with Christie Link Transmitter HDBaseT	2 x 12G-SDI 1 x HDMI 2.0 1 x DisplayPort 1.2 1 x Fiber (QSFP+) for use with Christie Link Transmitter HDBaseT
	optional	Dual 3G SD/HD-SDI input card Dual Link DVI input card High Bandwidth Multi-Input Card (HBMIC) Quad DisplayPort input card Twin HDMI input card Terra SDVoE input card	Dual 3G SD/HD-SDI input card Dual Link DVI input card High Bandwidth Multi-Input Card (HBMIC) Quad DisplayPort input card Twin HDMI input card Terra SDVoE input card
	pixel clock	1.2Gpx/s - Christie TruLife electronics	1.2Gpx/s - Christie TruLife electronics
Physical	dimensions	(LxWxH) 36.77x23.39x12" (934x594x305mm)	(LxWxH) 36.77x23.39x12" (934x594x305mm)
	weight	160lbs (72.57kg)	160lbs (72.57kg)
dBA		49dBA	49dBA



Christie Mirage 304K

30,000 Center
29,000 ANSI (typical)

2000:1

3DLP 1.38" 4K DMD

4K (4096 x 2160)

6 x 450W NSH

4 x Twin DisplayPort input card
HDBaseT

Dual 3G SD/HD-SDI input card
Dual Link DVI input card
High Bandwidth Multi-Input Card (HBMIC)
Quad DisplayPort input card
Twin HDMI input card
Terra SDVoE input card

1.2Gpx/s - Christie TruLife electronics

(LxWxH) 36.77x23.39x12" (934x594x305mm)

160lbs (72.57kg)

49dBA

Christie Boxer 2K30

Up to 32,500 ISO
30,000 Center
29,000 ANSI (typical)

2000:1

3DLP 1.38" 4K DMD

2K (2048 x 1080) upscaled onto 4K DMD

6 x 450W NSH

2 x 12G-SDI
1 x HDMI 2.0
1 x DisplayPort 1.2
1 x Fiber (QSFP+)
for use with Christie Link Transmitter
HDBaseT

Dual 3G SD/HD-SDI input card
Dual Link DVI input card
High Bandwidth Multi-Input Card (HBMIC)
Quad DisplayPort input card
Twin HDMI input card
Terra SDVoE input card

300 Mpx/s - Christie TruLife Lite electronics

(LxWxH) 36.77x23.39x12" (934x594x305mm)

160lbs (72.57kg)

49dBA

Christie Boxer 2K20

Up to 22,000 ISO
20,000 Center
19,500 ANSI (typical)

2000:1

3DLP 1.38" 4K DMD

2K (2048 x 1080) upscaled onto 4K DMD

4 x 450W NSH

2 x 12G-SDI
1 x HDMI 2.0
1 x DisplayPort 1.2
1 x Fiber (QSFP+)
for use with Christie Link Transmitter
HDBaseT

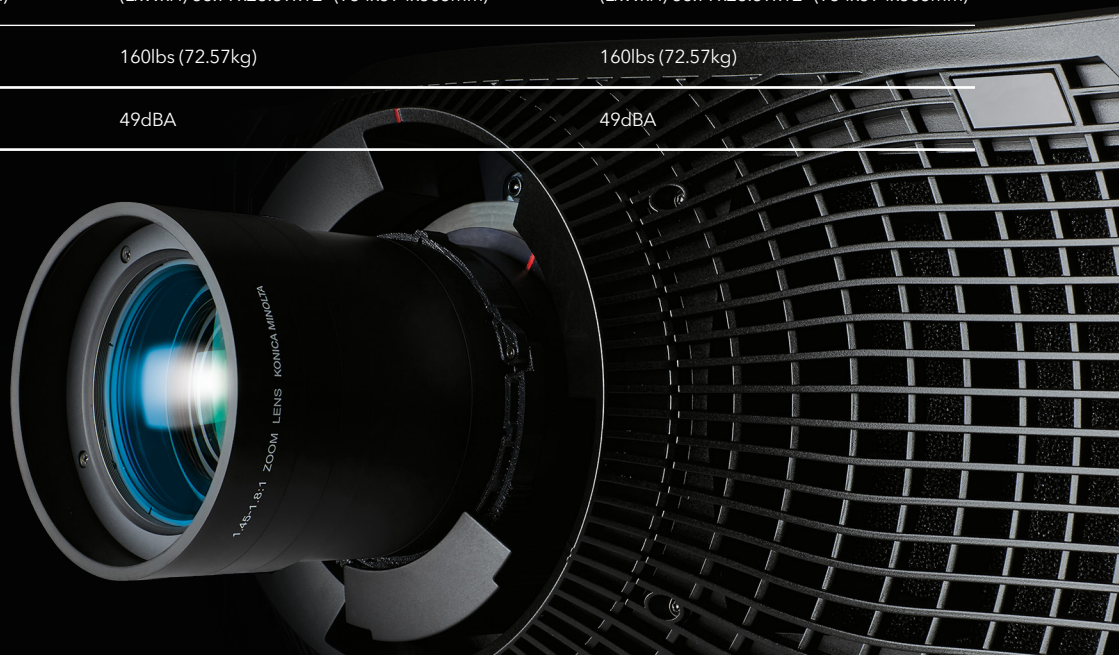
Dual 3G SD/HD-SDI input card
Dual Link DVI input card
High Bandwidth Multi-Input Card (HBMIC)
Quad DisplayPort input card
Twin HDMI input card
Terra SDVoE input card

300 Mpx/s - Christie TruLife Lite electronics

(LxWxH) 36.77x23.39x12" (934x594x305mm)

160lbs (72.57kg)

49dBA



¹ Source: Future Source 2006-2017 quarter one

Corporate offices

Christie Digital Systems USA, Inc.
Cypress
ph: 714 236 8610

Christie Digital Systems Canada Inc.
Kitchener
ph: 519 744 8005

Independent sales consultant offices

Italy
ph: +39 (0) 2 9902 1161

Russia
ph: +7 (495) 930 8961

Worldwide offices

Australia
ph: +61 (0) 7 3624 4888

Brazil
ph: +55 (11) 2548 4753

China (Beijing)
ph: +86 10 6561 0240

China (Shanghai)
ph: +86 21 6278 7708

Columbia
ph: +57 (318) 447 3179

Eastern Europe
ph: +36 (0) 1 47 48 138

France
ph: +33 (0) 1 41 21 44 04

Germany (Cologne)
ph: +49 221 99 512-0

Germany (Moechengladbach)
ph: +49 2161 566200

India
ph: +91 (080) 6708 9999

Japan
ph: +81 3 3599 7481

Mexico
ph: +52 55 4744 1790

Republic of South Africa
ph: +27 11 251 0000

Singapore
ph: +65 6877 8737

South Korea
ph: +82 2 702 1601

Spain
ph: +34 91 633 9990

United Arab Emirates
ph: +971 (0) 4 503 6800

United Kingdom
ph: +44 (0) 118 977 8000

United States (Arizona)
ph: 602 943 5700

United States (New York)
ph: 646 779 2014



For the most current specification information, please visit www.christiedigital.com

Copyright 2017 Christie Digital Systems USA, Inc. All rights reserved. All brand names and product names are trademarks, registered trademarks or tradenames of their respective holders. Christie Digital Systems Canada Inc.'s management system is registered to ISO 9001 and ISO 14001. Performance specifications are typical. Due to constant research, specifications are subject to change without notice. Printed in Canada on recycled paper. 4562 Oct 17

CHRISTIE®